



THOMSON REUTERS

# THE USE OF INCITES IN RESEARCH PERFORMANCE EVALUATION

DR. EVANGELIA A.E.C. LIPITAKIS  
OCTOBER 2014, PRAGUE

# INCITES

Bibliometric analysis of research output and impact with peer comparisons.



# InCites – RPP: Citation Frequency Distribution

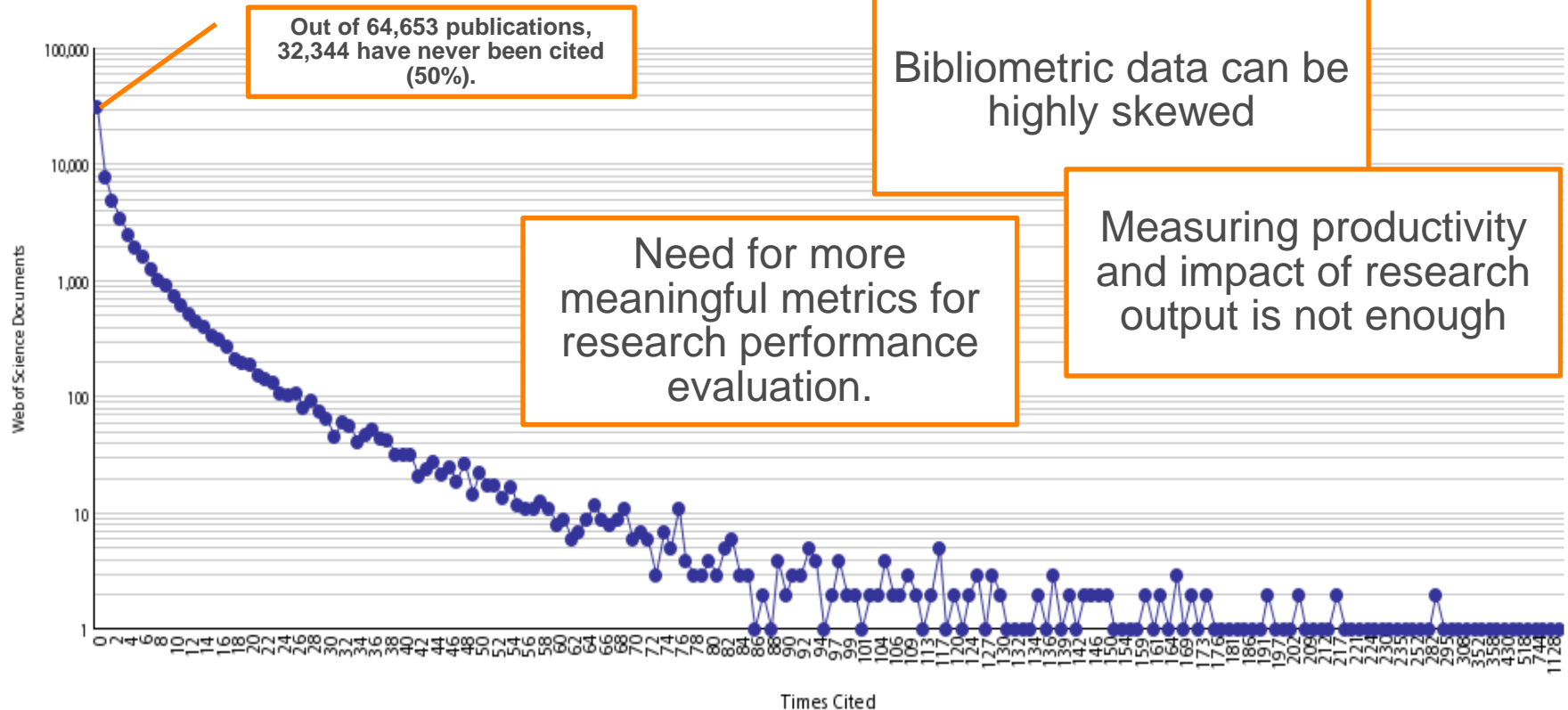
Report Limited To

Dataset: Czech Republic: 2005-2011: InCites Appraisal Dataset

Report Type: Citation Frequency Distribution

Time Period: 2005 - 2011

Additional Information: Cite this report as InCitesTM, Thomson Reuters (2014). Report Created: Jan 4, 2014 Data Processed Feb 14, 2011 5:34:23 PM Data Source: Web of Science ® This data is reproduced under Science business of Thomson Reuters. Subject area baseline data processed Unavailable



# InCites – Why Normalized Metrics?

**The average number of citations varies significantly across disciplines  
(Field normalization)**

**The average citation maturity rate differs between fields  
(Field, Time normalization)**

**Citations are dynamic; they grow over time and cannot be compared across different time periods  
(Time normalization)**

**Different publication types have different citation behaviour  
(Publication type normalization)**



# InCites - Article Level Metrics

'How many citations should I expect from my papers?'

How do my papers perform in my field?'

'How do other researchers perform in my field?'

'How do my papers perform in the journals I publish?'

'How is my research perceived by the journals I publish in?'

'Knowing I am better than average is not enough. Where do my research papers stand in competition to other similar papers?'

The ratio of all citations over all publications in a given year, **journal** and publication type

Indicator of performance in the **field**:  
If >1, performs higher than average  
If <1, performs lower than average

Article Title	Authors	Source	Volume	Issue	Pages	Publication Date	Times Cited	Journal Expected Citations	Category Expected Citations	Journal Normalized Citation Impact	Normalized Citation Impact	Percentile in Subject Area	Journal Impact Factor
Human capital creation, accumulation and management in Lithuania: The case of national and foreign capital enterprises	GRUNDEY, DAINORA; VARNAS, DARIUS	TRANSFORMATIONS IN BUSINESS & ECONOMICS	5	3	81-105	2006	15	4.31	12.14	3.48	1.24	20.53	0.26

A class of advanced bibliometric indicators for quantitative research performance evaluation

The ratio of all citations over all publications in a given **journal**, year and publication type

Indicator of performance in the **journal**:  
If >1, performs higher than average  
If <1, performs lower than average

**Percentile** is a value above which a certain proportion of the observations fall  
  
Percentiles allow the classification of publications into meaningful citation impact classes  
  
The smaller the percentile number, the higher the number of citations



# InCites – Individual Researcher

Examples of how InCites users are applying the data

- Identify high-impact researchers in each department and use them as mentors for other faculty members.

Monitor research performance in the **field**:  
If  $>1$ , performs higher than average  
If  $<1$ , performs lower than average

Monitor research performance in the **journal**:  
If  $>1$ , performs higher than average  
If  $<1$ , performs lower than average

Name	Rank	Web of Science Documents	Times Cited	Citation Impact	h-index	Normalized Citation Impact	Journal Normalized Citation
Researcher A	1	66	291	4.4	9	1.32	1.86
Researcher B	2	62	289	4.66	9	0.45	0.72

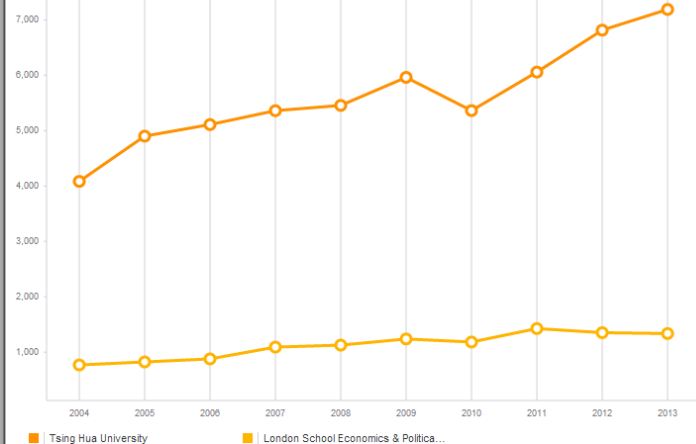
Differentiate between research output of same productivity and impact in terms of its performance in category and journal dataset and use information to enhance your research performance

# Normalized Citation Impact (NCI) - Institutions

For example, lets try to compare LSE and Tsing-Hua University..

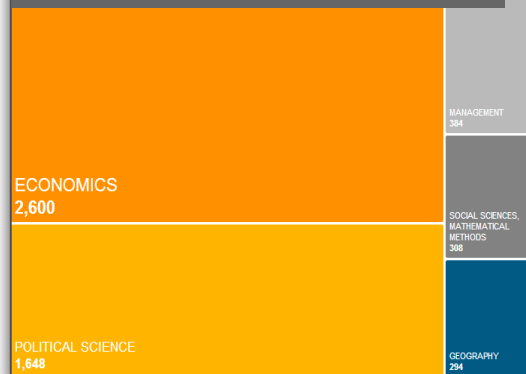
## Different Publication Output

Productivity - # of WoS Documents

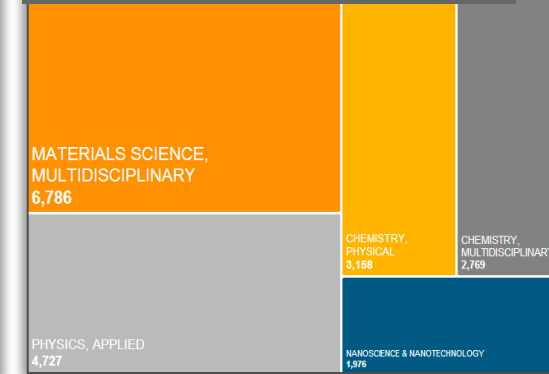


## Different Research Areas

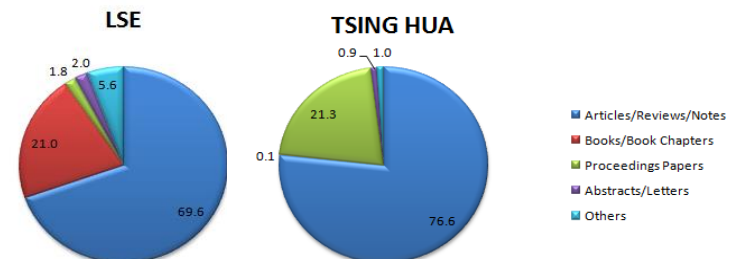
LSE - Top 5 WoS Areas



Tsing Hua - Top 5 WoS Areas



## Different Publication Types



# Normalized Citation Impact (NCI) - Institutions

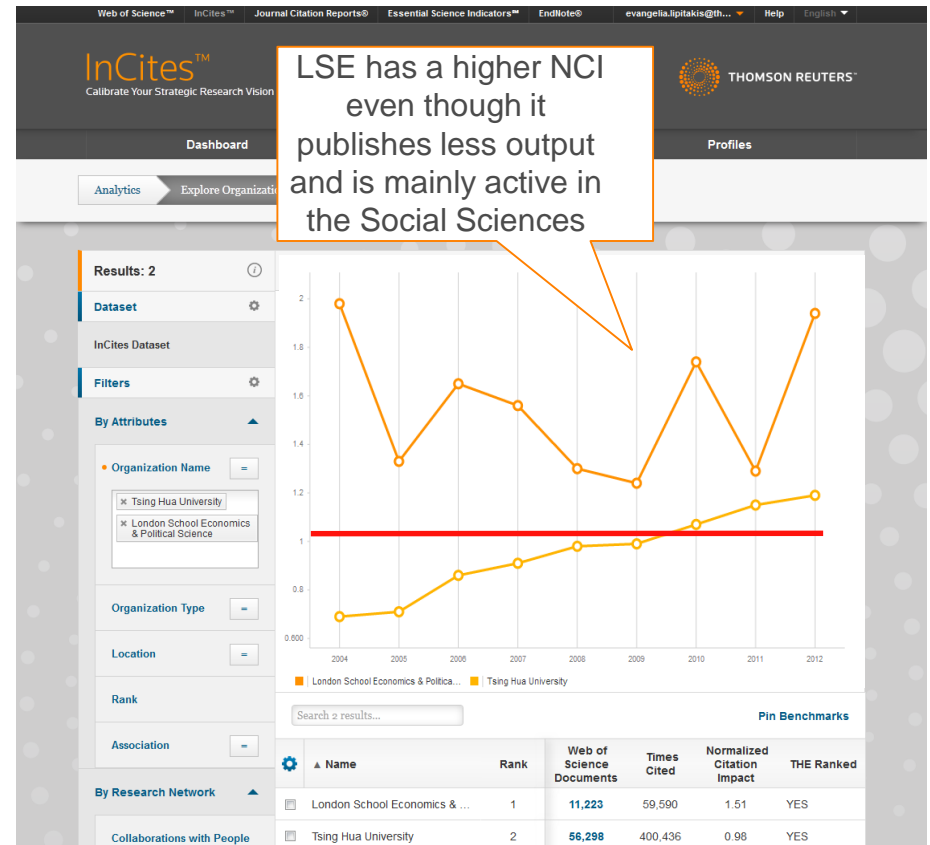
The **Normalized Citation Impact** indicator allows meaningful comparisons of institutions/countries in *different subject mix* and *different publication rates*

'How do my papers perform in my field?'  
'How do other institutions perform in my field?'



## World University Rankings 2013-2014

001 - 200	201 - 225	226 - 250	251 - 275	276 - 300	301 - 350	351 - 400
Rank	Institution	Location	Overall score	change criteria		
32	London School of Economics and Political Science (LSE)	United Kingdom	69.8			
50	Tsinghua University	China	63.5			





# A CLASS OF BIBLIOMETRIC INDICATORS FOR RESEARCH PERFORMANCE EVALUATION

Apply key quantitative based performance indicators as accountability measures to support funding proposals, foster strategic collaborations and make informed decisions.



# INCITES BENCHMARKING & ANALYTICS

Benchmark

Analyze

Collaborate

Evaluate



User friendly and interoperable platform combining all TR analytic products



Create research entities at all levels  
(author, research group, institution, country, field, publication output)



Select from a wide range of advanced bibliometric indicators



Apply flexible analysis with multiple filters



Analyze big datasets instantly  
(Create customized datasets in WoS and export them to InCites for analysis, coming soon)



Produce enhanced visualizations, user friendly reports and comprehensive tables

# INCITES 2 DATA OVERVIEW

<b>Source Edition: Web of Science Core Collection Data</b>	<ul style="list-style-type: none"><li>• SCIE, SSCI, A&amp;HCI, CPCI-S, CPCI-SSH, BKCI-S, BKCI-SSH</li></ul>
<b>Citing Edition:</b>	<ul style="list-style-type: none"><li>• ALL</li></ul>
<b>Document Types:</b>	<ul style="list-style-type: none"><li>• ALL (Articles, Reviews, Letters, Editorials, Conference Proceedings, Books, Book Chapters, etc)</li></ul>
<b>Organizations:</b>	<ul style="list-style-type: none"><li>• 4,600 unified organizations</li></ul>
<b>Regions:</b>	<ul style="list-style-type: none"><li>• 220 Countries</li></ul>
<b>Subject Schemas:</b>	<ul style="list-style-type: none"><li>• 11 Discipline Schemas (including WoS &amp; ESI categories and regional schemas)</li></ul>
<b>Publication Types:</b>	<ul style="list-style-type: none"><li>• 98,000+ Publication types from Web of Science Core Collection</li></ul>
<b>Time Period:</b>	<ul style="list-style-type: none"><li>• 1 Year, Cumulative</li></ul>
<b>Data and Benchmarks:</b>	<ul style="list-style-type: none"><li>• Will be updated bimonthly</li></ul>
<b>Source and Citing Years:</b>	<ul style="list-style-type: none"><li>• 2004-2013 (30 years of historic data, coming soon)</li></ul>



# INCITES PROFILING SYSTEM

## Powered by Converis

Web of Science® InCites™ Journal Citation Reports® Essential Science Indicators EndNote® Research Portal Help My Settings Logout

**CONVERIS**  
Research Information System

THOMSON REUTERS™

Scott M. J. Matheson, PH.D.  
Researcher ▼

Dashboard Analytics **Converis**

**Dashboard**  
Data last updated 9/26/2013

Search this set...

**Notifications**

- A Tubular Goodbye for Fluorescent Light Bulbs**  
If you've worked in an office, you're probably familiar with the soft glow of fluorescent tubes drifting from the ceiling. If Europ...  
The New York Times, Sep 26, 2013
- Collegiate Ingenuity: MIT Graduates Are Hitting The Ground and Running**  
consectetur adipisicing elit, sed do eiusmod tempor incididunt u...  
Popular Mechanics, Sep 26, 2013
- Can Nickles Save The World?**  
Duis aute irure dolor in reprehenderit in voluptate velit esse cillum dolore eu fugiat nulla pariatur. Excepteur sint occaecat c...  
Article Source, Sep 26, 2013

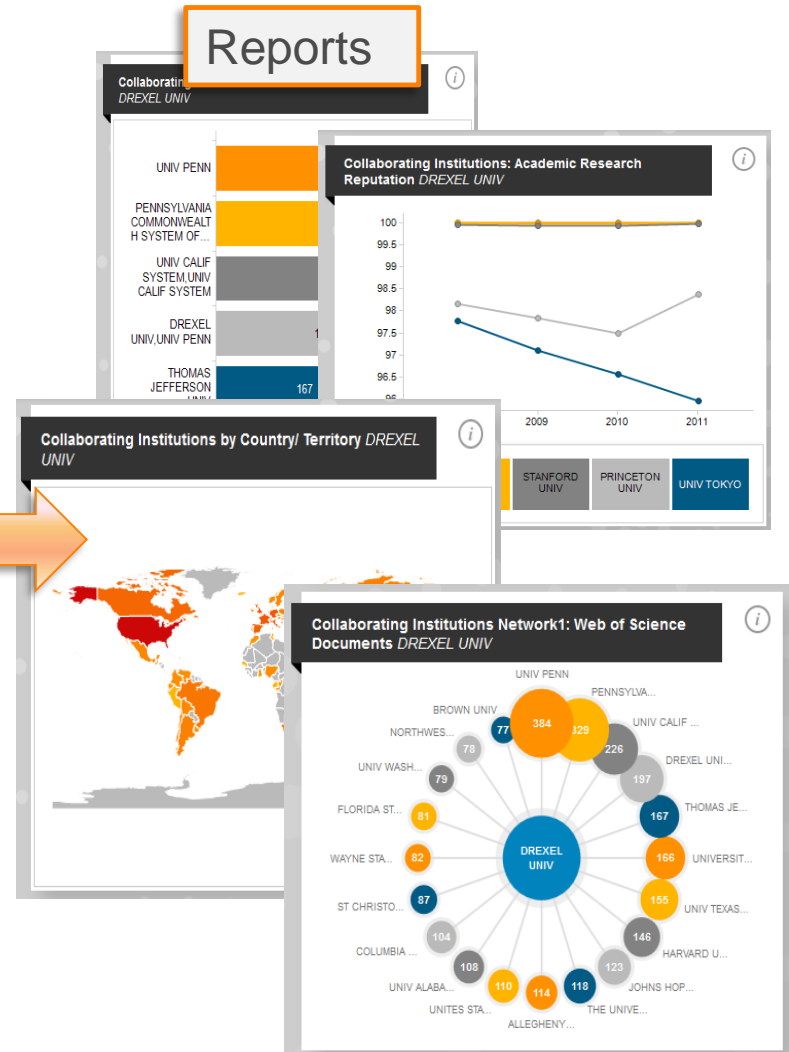
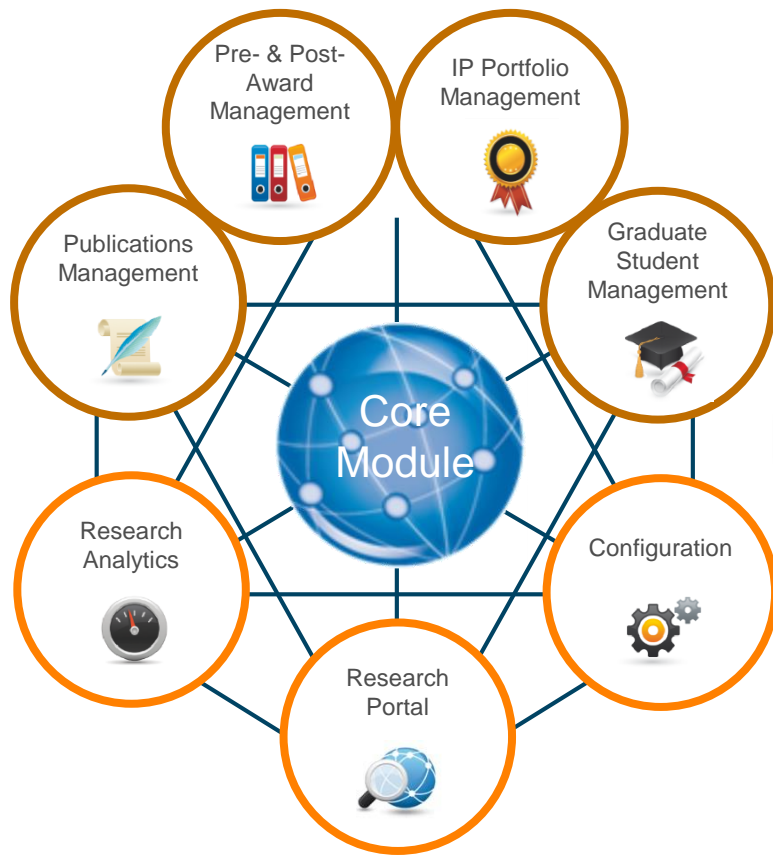
[View All News Articles](#)

**Things to do**

- Publications for completion 366
- Further information for application 380
- Patents for completion 440
- Projects for completion 480
- Ethic reviews for completion 452

A full research management information system with unique bibliometric analysis capabilities

# CONVERIS INFORMATION AND WORKFLOW MANAGEMENT



Thank you!



THOMSON REUTERS